



Figure 1: Downtown Williams 1914



Figure 2: Streetscape/Zero Building Setback



Figure 3: Typical Roof Parapets



Figure 4: Windows



Figure 5: Storefront and Transom Windows



Figure 6: Windows



Figure 7: Storefront



Figure 8: Storefront



Figure 9: Storefront



Figure 10: Storefront



Figure 11: Landscaping



Figure 12: Preservation of Existing Facade



Figure 13: One-Story Building Massing



Figure 14: Two-Story Building Massing



Figure 15: Preservation of Original Wood Window



Figure 16: Vertical Window with Transom



Figure 17: Second Floor Vertical Windows



Figure 18: Storefront with Transom



Figure 19: Storefront with Transom Windows



Figure 20: Window to Wall Areas - First and Second Floors



Figure 21: Wood Door (recommended)



Figure 22: Wood Door



Figure 23: Wood Door



Figure 24: Stone Veneer



Figure 25: Mixed Masonry Types (brick and stone)



Figure 26: Brick Facade/Wood and Glass Storefront



Figure 27: Painted Brick Facade  
(acceptable but unfinished preferred)



Figure 28: Stone Facade



Figure 29: Stucco (as an accent only)



Figure 30: Wood Trim



Figure 31: Wood Trim



Figure 32: Parapet



Figure 33: Awning over Storefront



Figure 34: Awning over Doorway



Figure 35: Multiple Awnings over Doorway and Storefront



Figure 36: Second Floor Awnings



Figure 37: Building, Window and Projecting Signs



Figure 38: Building and Window Signs



Figure 39: Awning Sign



Figure 40: Projecting Sign



Figure 41: Neon and Window Signs



Figure 42: Natural Stone (signage and awning as color accent)

Dark contrasting trim color (common for utility buildings/gas stations)

White painted masonry block - typical gas station color



Signage painted on fascia of gas station canopy (restored bright colored pumps)

Original garage doors color painted bldg color

Figure 43: Gasoline Station (white with bold accent color)

Muted two-toned painted brick facade

Exposed brick preserved where stucco has fallen away



Storefront white and window trim matches wall color

First floor facade painted (only)

Figure 44: Two-Story Brick (neutral colors/white accent)



Light colored soffit (reflects light)

Trim color complimentary to brick and mortar color

Unfinished natural sandstone veneer

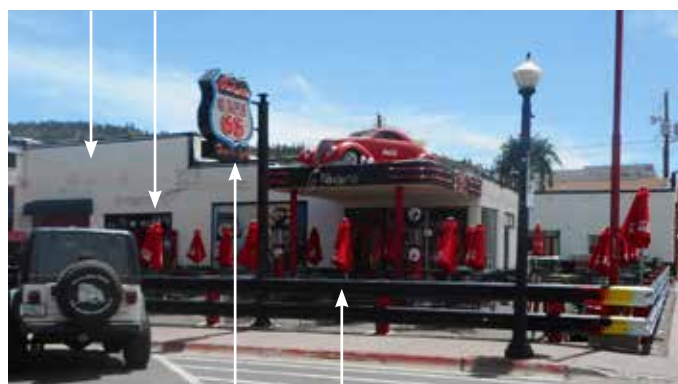
Painted wood door, frame and window trim match

Bronze colored kick plate compliments green door color

Figure 45: Sandstone (left unfinished; muted trim color)

White painted masonry block - typical gas station

Dark contrasting trim color (also common for utility buildings/gas stations of the era)



Historic Signage (Route 66) and bold colored streetscape fence and sun umbrellas

Figure 46: Historic Gasoline Station to Restaurant



Natural brick (unpainted)

Trim color complimentary to brick & mortar colors with green accent band, sill and door transom frame

Unfinished sandstone veneer

Painted wood door color matches green trim bands

Figure 47: Brick & Stone with muted accent colors



Preserved "ghosted" historic signage painted on brick

Signage compliments the building color

Black trim with gold accents

Modern neon sign at window (interior)

Figure 48: Natural materials with bold accent colors